

Shower Design Guide



We're Everywhere
You Look

PG
Portland Glass.
a neighborly company



A Worthwhile Investment in Your Home

A beautiful glass shower enclosure is the centerpiece of any bathroom. It anchors the room, directs the light and significantly increases the resale value of your home. From basic framed shower doors to elaborate custom heavy glass enclosures, Portland Glass® offers it all. Our glass experts will guide you through the entire process, including design, budget, installation and maintenance.

Why Portland Glass?

After learning the ins and outs of the glass trade, Samuel Cohen chose to open his own glass shop in 1947. As automobiles rolled off the assembly lines in great numbers following World War II, Sam foresaw a promising future for the auto glass replacement business, and he was right.

Gene Cohen took the reins at Portland Glass after his father's death in 1963 and began the task of expanding and diversifying the company. He added new retail lines, offered replacement services for storefront glass, and opened new service centers. He also looked for opportunities to improve the delivery of services. Gene's commitment to innovative ideas and unparalleled service would eventually guide Portland Glass to prominence as one of the leading glass companies in the industry. respect and knowledge they come to expect. Now, with over 300 employees, Portland Glass truly is the trusted glass company in Northern New England.



Hardware/Finish Options

HANDLES



C-PULL
BACK TO BACK 6"



LADDER PULL
BACK TO BACK 6"



SQUARE PULL
BACK TO BACK 6"



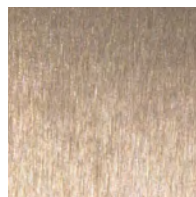
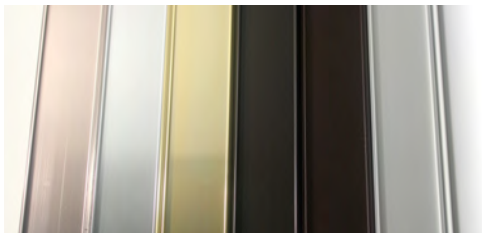
CRESCENT PULL
BACK TO BACK 6"

TOWEL BARS



STANDARD 3/4" DIAMETER
THROUGH THE GLASS

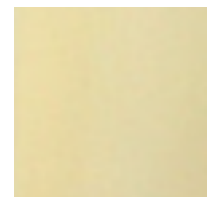
FINISH OPTIONS



Brushed
Nickel



Chrome

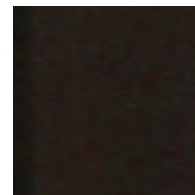


Gold

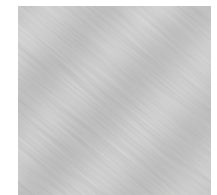
Not all finishes are available in all enclosures. Ask your glass specialist for more information on finish options.



Oil Rubbed
Bronze



Roman
Bronze



Satin

Not all options are shown, and some may not be available for certain products. Ask your glass specialist for more information.

BEVELED EDGE HINGES



WALL MOUNTED
HINGE WITH SOLID
BACK PLATE



180° HINGE
GLASS TO GLASS



TOP MOUNT PIVOT HINGE
WITH ATTACHED CLIP



PIVOT HINGE

SQUARE EDGE HINGES



WALL MOUNTED
HINGE WITH SOLID
BACK PLATE



180° GLASS TO
GLASS HINGE

CLIPS



BEVELED GLASS
TO WALL CLIP

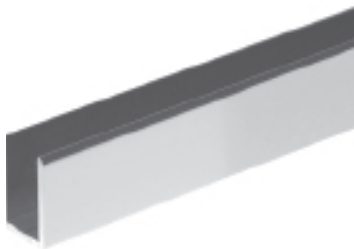


SQUARE GLASS
TO WALL CLIP

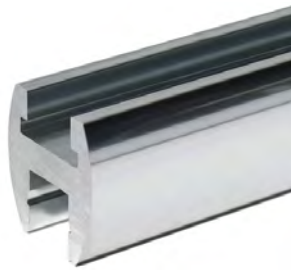


HEAVY WALL CLIPS

OTHER HARDWARE



U-CHANNEL



HEADER



SLEEVE OVER
90° CLIP

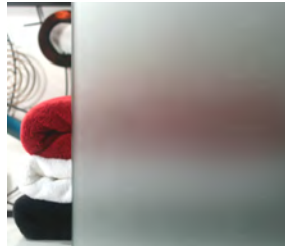


SLEEVE OVER
130° CLIP

Not all options are shown, and some may not be available for certain products. Ask your glass specialist for more information.

Glass Options

HEAVY GLASS PATTERNS



Acid Etch



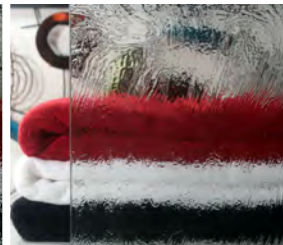
Antique



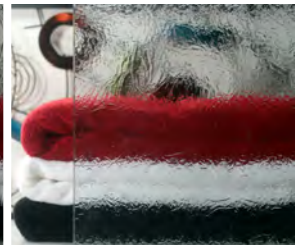
Bamboo



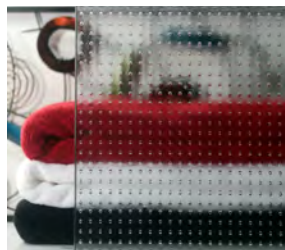
Bubbles



Forest



Glue Chip



Master Carre



Monumental



Rain

CLEAR & COLORED GLASS



Clear



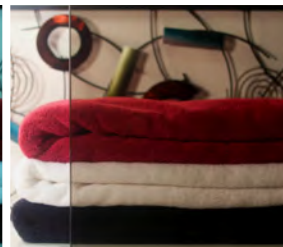
Starphire



Solexia



Azuria



Bronze



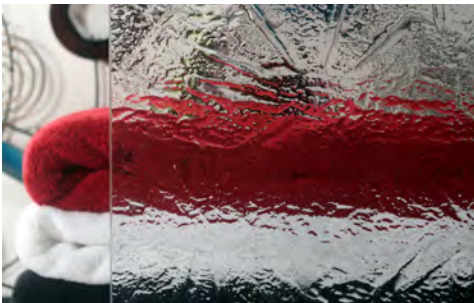
Smoke

Not all options are shown, and some may not be available for certain products. Ask your glass specialist for more information.

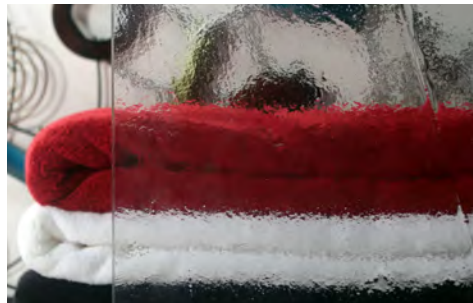
Low-Iron Glass



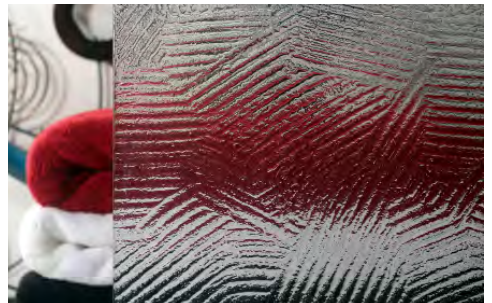
Affinity



Flurry



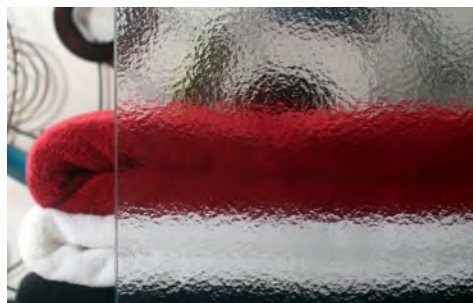
Lunar



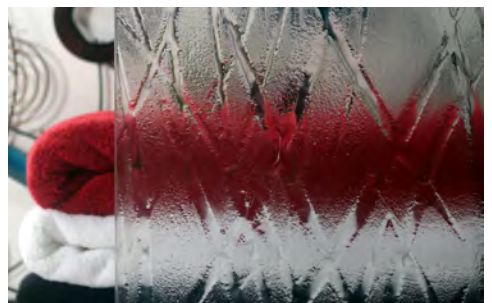
Paint



Rain



Tranquility



Wisp

Not all options are shown, and some may not be available for certain products. Ask your glass specialist for more information.

The following are specifications and options which will impact the final price of your shower door:

1. Glass

- Dimensions – Glass is priced by square foot.
- Type – Prices shown are for 3/8" clear glass. Additional charges will apply for obscured, tinted and other types of glass.

2. Additional Glass Fabrication Items

- Outages – Are the walls square and floors level?
- Extra Holes and Finger Notches
- Extra Hinge Cutouts
- Notched Panels

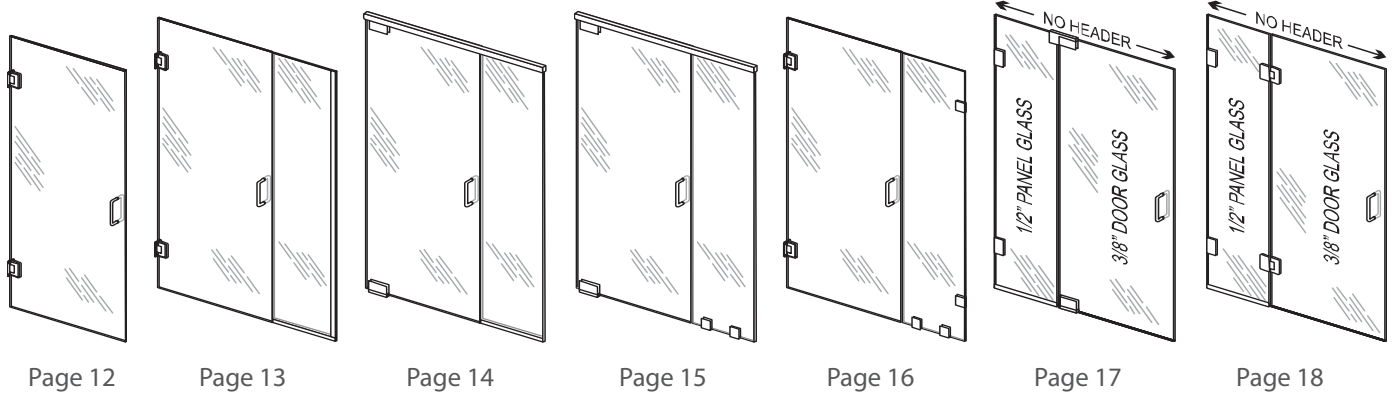
3. Hardware

- Hinges - Are standard or heavy duty required? *This depends on the weight of the door.*
- Wall Attachments
- Finishes - In order of least expensive to most expensive:
 - ▶ Chrome / Gold
 - ▶ Brushed Nickel
 - ▶ Satin
 - ▶ Oil Rubbed Bronze
 - ▶ Roman Bronze

4. Glass Coating

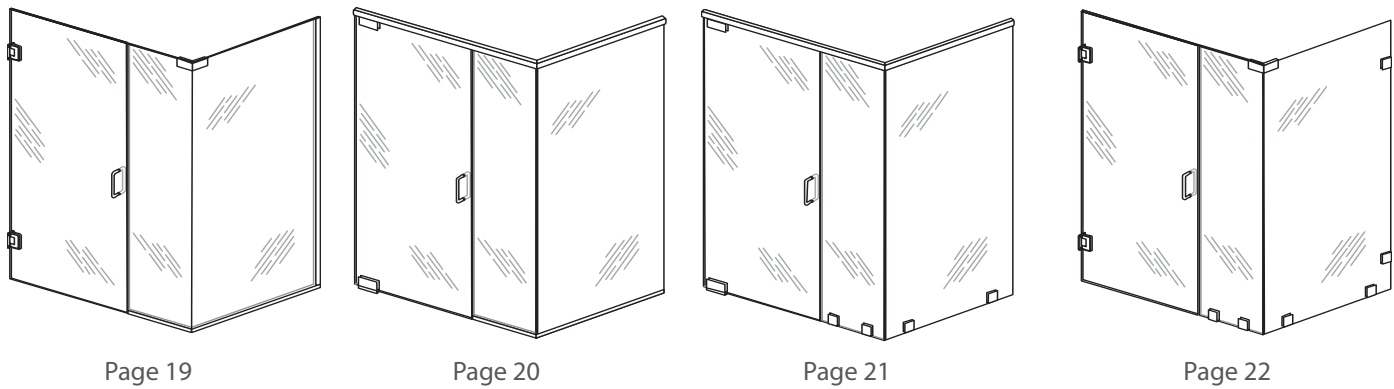
- Application of protective coating to the surface of the glass. This protectant makes surfaces easier to clean by making them more water and oil repellent.

The less water and oil sticks to the surface, the less they can deposit their contents, such as hard water stains and soap scum.

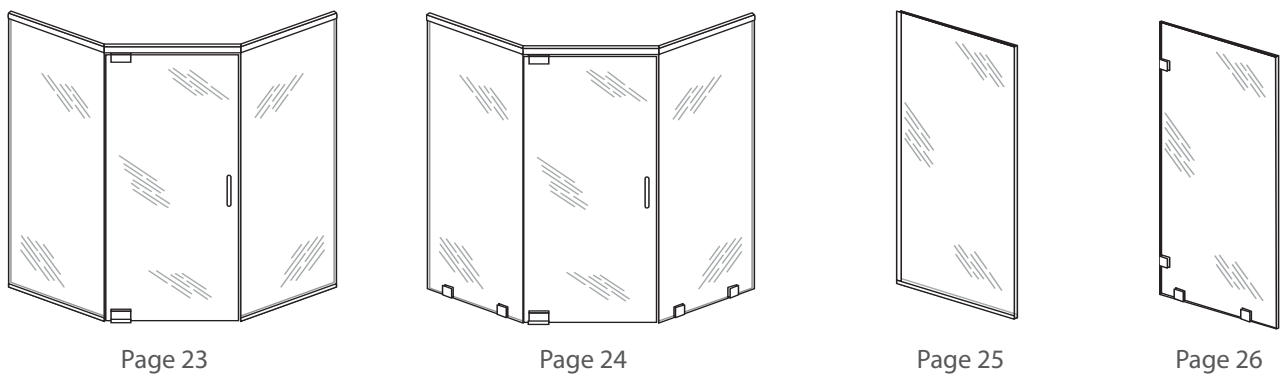


SWING

DOOR WITH SIDE PANEL (IN-LINE)



DOOR WITH SIDE PANEL (IN-LINE) AND RETURN



SWING DOOR WITH NEO ANGLE PANELS

BATH SCREENS

Not all options are shown, and some may not be available for certain products. Ask your glass specialist for more information.

ShowerGuard®

Hard water, humidity, heat, soap and even cleaning agents can spot, discolor and corrode the surface of ordinary glass, making it dull over time. ShowerGuard glass provides permanent, proven protection. It stays beautiful for a lifetime - guaranteed.

ShowerGuard glass is coated using a patented technology. The result is an invisible protective barrier that prevents the glass from showing signs of age and build up of permanent damage. Let ShowerGuard glass complement your bathroom design.



SHOWER Protect PLUS™

Shower Protect Plus is an easy to use and highly effective glass treatment that provides protection for shower glass and all glass surfaces. This advanced, ultra thin nano coating repels water, lime scale, dirt and soap scum.

- Reduces cleaning time by 95%
- Works on all glass
- Repels water and dirt
- Scratch resistant hard coating
- Easy and fast to apply



Venetian Cast Glass

We offer many three-dimensional patterns, but there is no limit to the design opportunities. You can supply us with your own design, or even let our specialty glass artists design a custom pattern for you.



Creek



Cottage



Lava



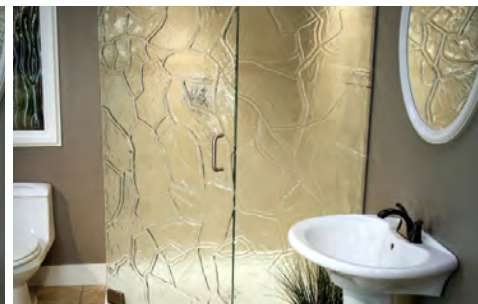
Lodge



Meander



Palm



Rock Wall



Safari



Sensu

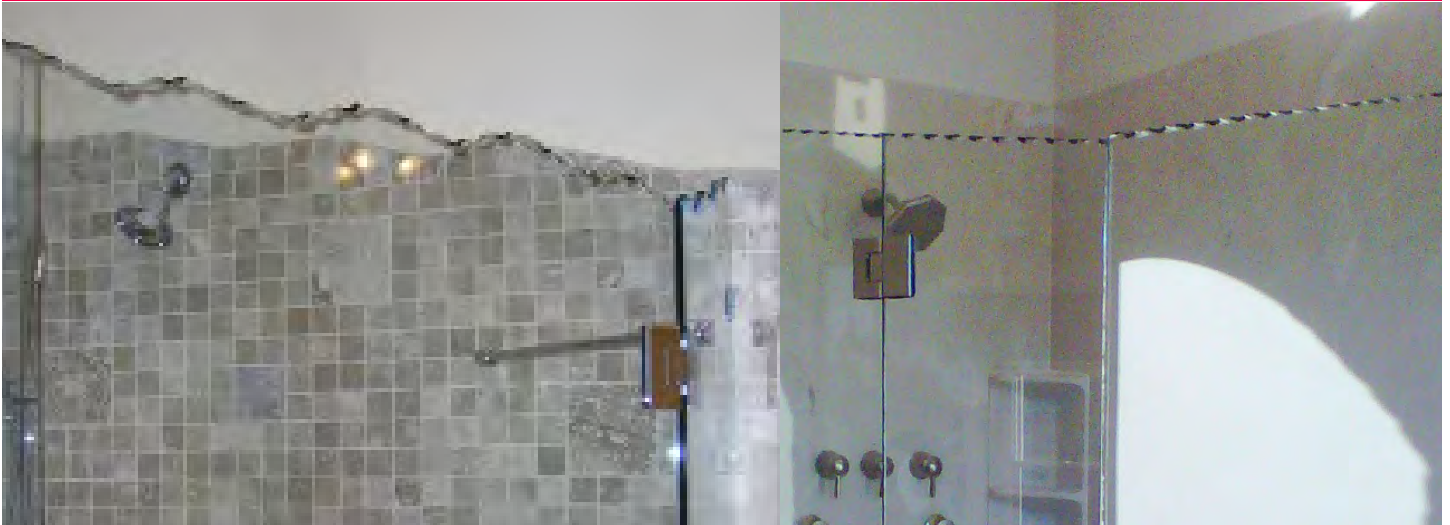


Storm



Waterfall

Not all options are shown, and some may not be available for certain products. Ask your glass specialist for more information.



LASER CUT

For a dramatic looking shower, you can add a chipped edge to your heavy glass shower enclosure. A “chipped edge” refers to the scalloped edge work on the glass.



ETCHED GLASS

The beauty of etched glass is that it gives you an open and spacious look with privacy. Custom designed etched shower doors are the perfect touch to give any bathroom the look and feel of a luxury spa.



HEAVY GLASS SHOWER ENCLOSURES



Portland Glass of _____

Date:	_____
-------	-------

Customer Name:	_____	City:	_____	Work Order #	_____
----------------	-------	-------	-------	--------------	-------

DESCRIPTION	CUSTOMIZATIONS	INVESTMENT
Glass	3/8" Clear	\$
Glass Upgrade	Description:	\$
Fabrication	Out of Square _____ Finger Notch for Clip _____ Buttress _____ Extra Hole(s) _____ Notched Panel _____	\$
SUBTOTAL FOR GLASS		\$
Hardware	<input type="checkbox"/> Brushed Nickel <input type="checkbox"/> Chrome <input type="checkbox"/> Gold <input type="checkbox"/> Satin <input type="checkbox"/> Oil Rubbed Bronze <input type="checkbox"/> Roman Bronze	\$
	<input type="checkbox"/> Seals	\$
Clear Shield	<input type="checkbox"/> Height _____ x Width _____ ÷ 144 = _____ sq. ft. x _____ =	\$
SUBTOTAL FOR HARDWARE AND CLEAR SHIELD		\$
TOTAL FOR SHOWER DOOR INCLUDING INSTALLATION		\$
Custom Work Description:		\$
Other:		\$
Tax		\$
TOTAL INVESTMENT*		\$

Deposit Info:	_____
---------------	-------

**Quote is valid for 30 days.*

Customer Signature

Glass Specialist:

- ** Frameless door gaps are 1/4" with a +/- 1/8" tolerance.
- ** Frameless shower doors will have some water escape from the unit when the door is closed.
- ** The shower cub must be sloped towards the inside to prevent leaking.

Phone:

Email:

HEAVY GLASS SHOWER ENCLOSURES



Certificate of Completion

Job: _____ Date: _____

Start Time: _____ Completion Time: _____

Specialists: _____

PRIOR TO INSTALLATION

I understand Portland Glass may need to cut/grind or modify caps, seats or sills to accommodate the glass installation. Portland Glass will also need to drill (marble, granite, ceramic, etc.) to fasten hardware. Portland Glass will not be held responsible for any residual damage that may occur in the above explained process. **Frameless doors gaps are 1/4" with a +/- 1/8" tolerance. Frameless shower doors will have some water that escapes from the unit when the door is closed. The shower curb must be sloped towards the inside of the shower to prevent leaking.** Customer signature is required before proceeding.

Customer Signature _____

POST INSTALLATION

Job complete: Y N Check of all hardware and caulking: Y N

Clean up of excess material, packing, tools, etc.: Y N

Walk-through with site specialist: Y N

Site Specialist Comments: _____

I certify that the installation work completed by Portland Glass employees has been done to complete satisfaction. We understand that there may be a service charge applied if a specialist has to return at a later date for any adjustments or seal failures that are not because of a materials or workmanship.

Customer Signature: _____ Date: _____

Specialist Signature: _____ Date: _____

PG
Portland Glass.

We're Everywhere You Look

a **neighborly** company

Portland Glass® is New England's specialist
for home, auto and business glass.